



Bonita Peak Repository

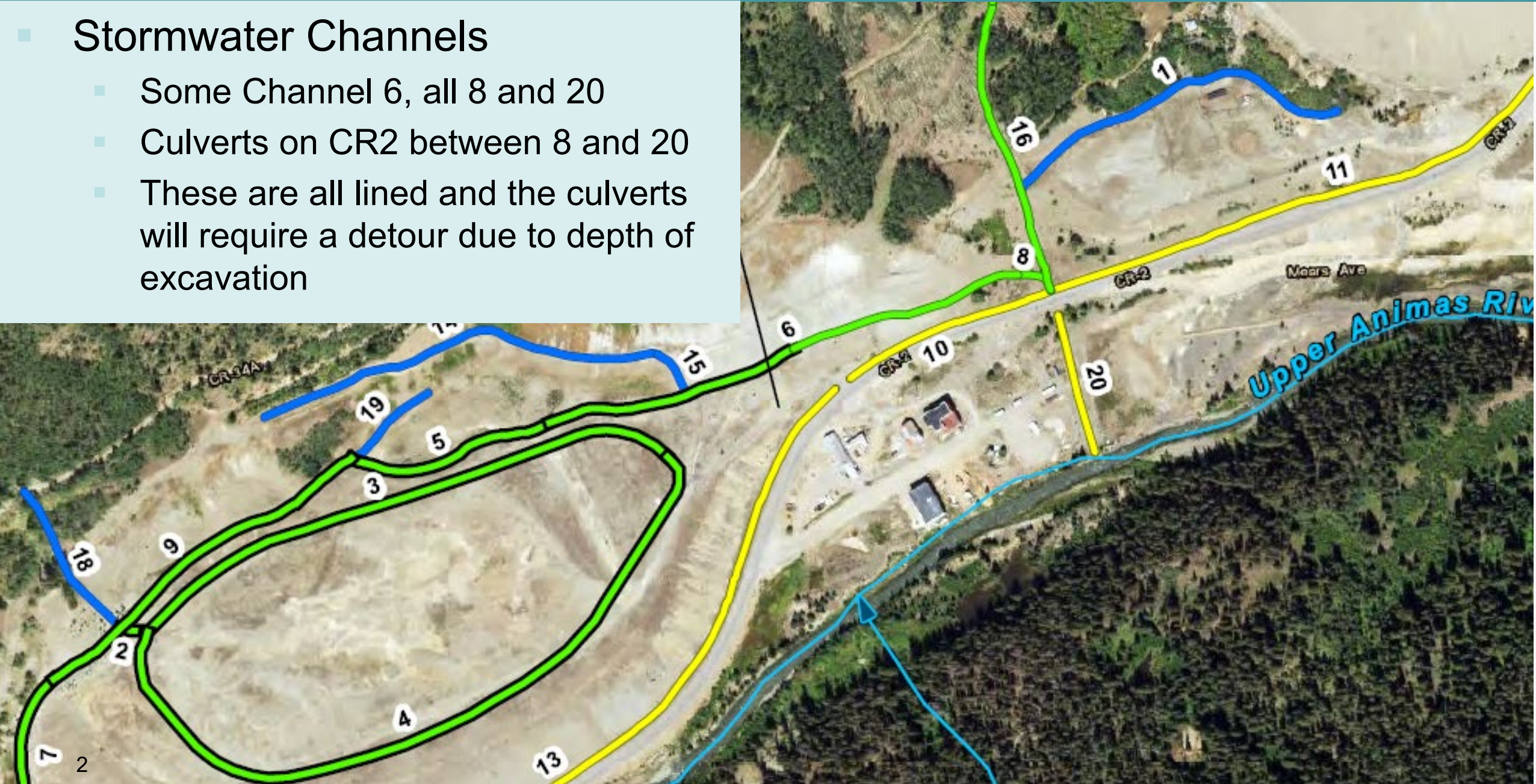
- Contract not awarded yet
- When it is, we will share
 - a mobilization date
 - subcontractor contacts
- Up next: refresher of remaining work



Repository (remaining construction and O&M)

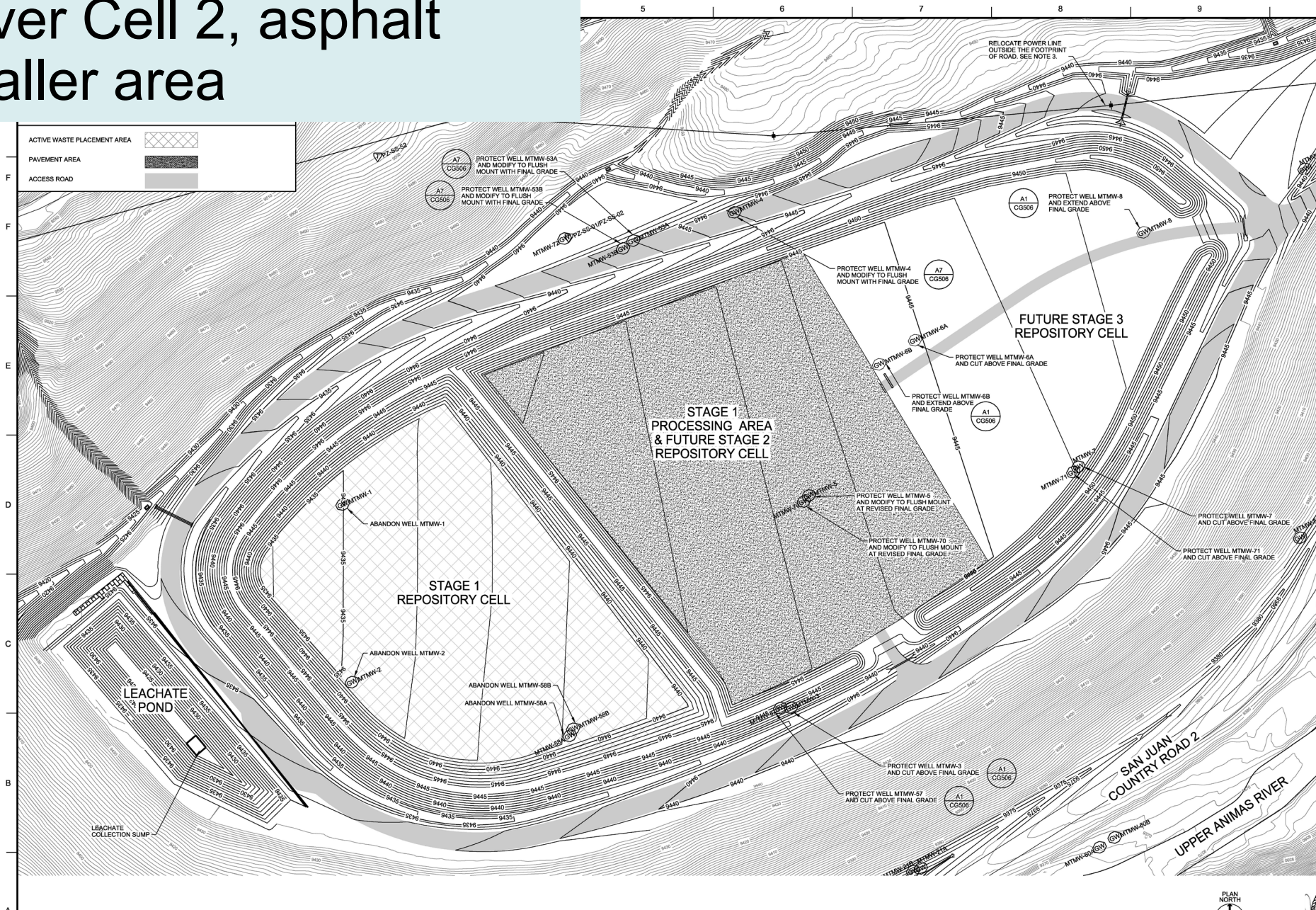
Stormwater Channels


- Some Channel 6, all 8 and 20
- Culverts on CR2 between 8 and 20
- These are all lined and the culverts will require a detour due to depth of excavation



Repository (remaining construction and O&M)

Cover Cell 2, asphalt smaller area





US Army Corps of Engineers

REVISION	DATE	DESCRIPTION
1		
2		
3		
4		
5		
6		
7		
8		
9		
10		

DESIGNED BY: C. GABRIEL

CHECKED BY: S. ZELER

SUBMITTED BY: J. WILSON

DATE: 12/15/2021

ANSI D 21.475-2017.2021

U.S. ARMY CORPS OF ENGINEERS

BENTON DISTRICT

1616 CAPITOL AVE # 300

OMAHA, NE 68102

CDM Smith

BENTON PEAK REPOSITORY

REMEDIAL DESIGN - PHASE 1

SAN JUAN COUNTY COLORADO

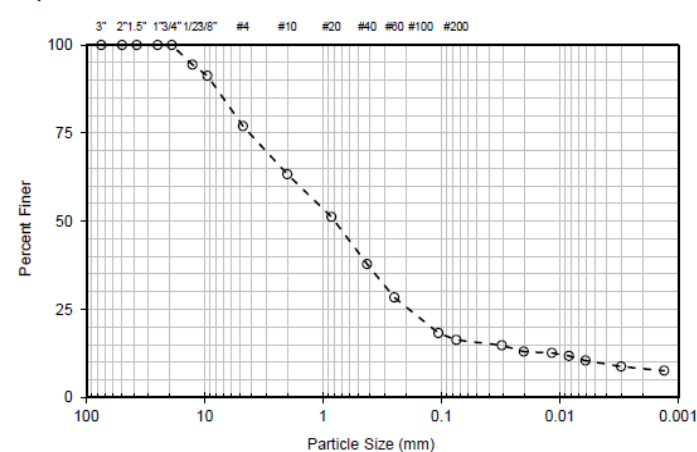
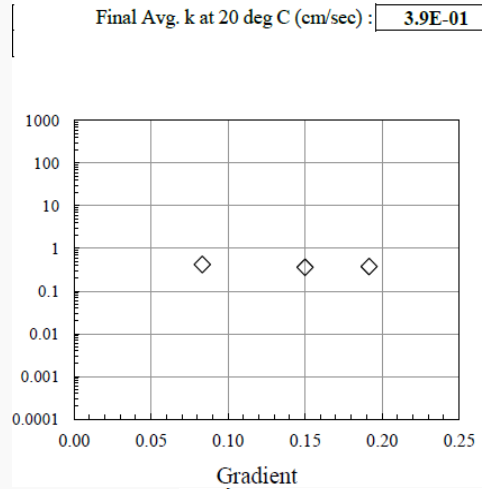
DEMO PLAN STAGE 1

(SHEET 1 OF 1)

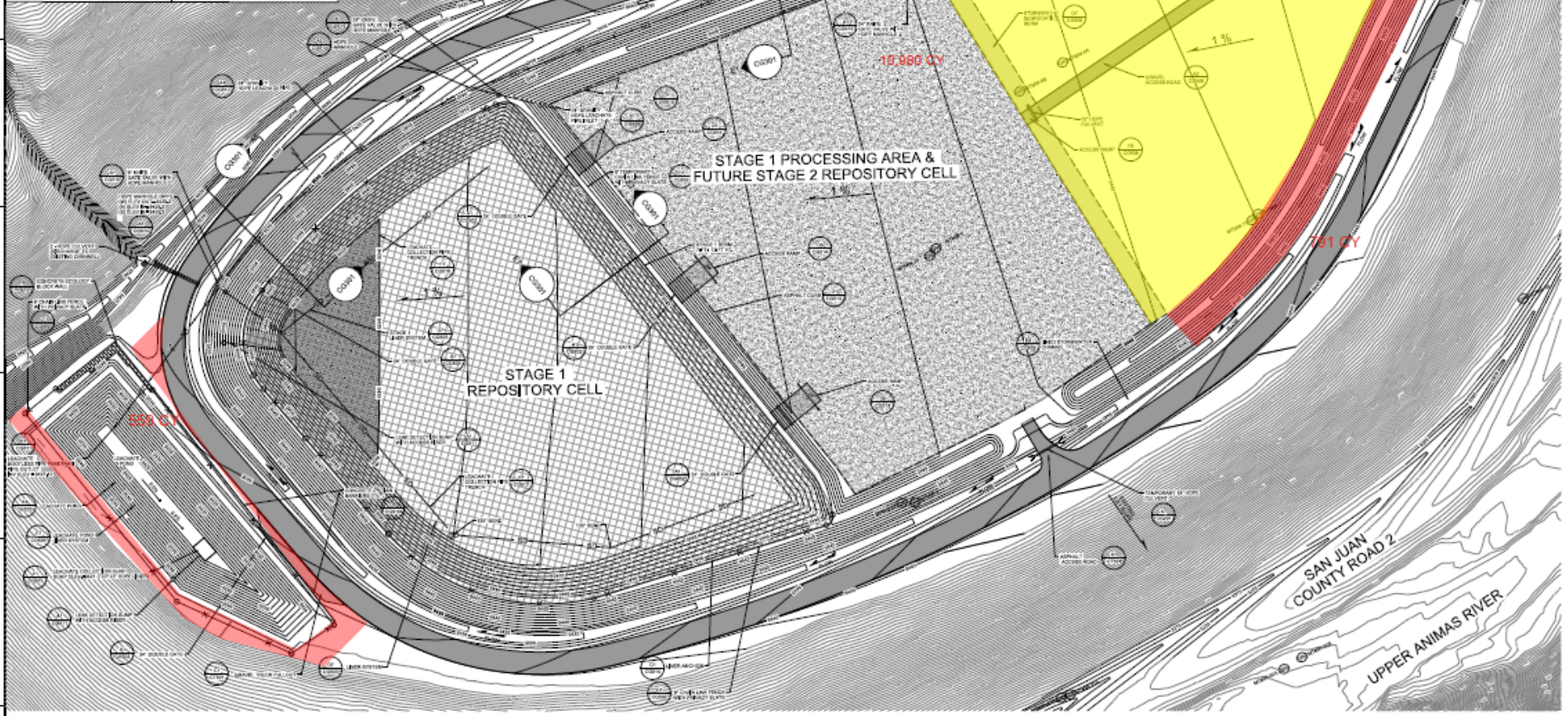
Repository (remaining construction and O&M)

Cell 3 Cover Materials

- ~20,000 tons



- GENERAL NOTES**
1. WELL MODIFICATIONS FOR STAGE 1 ARE SHOWN ON SHEET CG101. SEE SHEET CG104 FOR SUMMARY OF WELL MODIFICATIONS FOR ALL STAGES.
 2. STRIP UPPER TWO FEET OF COVER MATERIAL AND STOCKPILE SEPARATELY.
 3. TAILINGS SHALL BE MANAGED IN ACCORDANCE WITH SECTION 31.23.10 DURING REGRADING OF SUBGRADE. APPLY WATER TO EXPOSED TAILINGS AS NECESSARY FOR DUST SUPPRESSION.
 4. BERM GRADES REPRESENT FINAL GRADE.
 5. AREAS INSIDE OF OUTER BERM REPRESENT SUBGRADE.
 6. TEMPORARY BERMS MAY BE USED IN ACTIVE SLUDGE PLACEMENT AREA TO SEGREGATE MATERIALS.
 7. DURING GRADING, IF SLUDGE MATERIALS ARE EXCAVATED WITHIN THE STAGE 1 OR STAGE 3 CELLS PRIOR TO REACHING SUBGRADE, THE EXCAVATED SLUDGE SHALL BE RELOCATED TO THE STAGE 3 CELL AND INCORPORATED AS PART OF THE SUBGRADE, FOLLOWING PLACEMENT OF ANY SLUDGE IN CELL 3, STABILIZE THE SLUDGE AREA AS SHOWN ON SHEET CG016.
 8. DURING GRADING, IF SUBGRADES ARE REACHED AND SLUDGE MATERIALS REMAIN AT THE SURFACE, OVEREXCAVATE THE SLUDGE AREA BY 1 FOOT AND STABILIZE THE SLUDGE AREA AS SHOWN ON SHEET CG016.
- LEGEND**
- | | |
|-----------------------------|---------------------|
| ACTIVE WASTE PLACEMENT AREA | LEAK DETECTION AREA |
| PAVEMENT AREA | ACCESS ROAD |



A1 PLAN: GRADING PLAN STAGE 1
SCALE: 1"=60'



NO.	DESCRIPTION	DATE

CDM Smith

U.S. ARMY CORPS OF ENGINEERS
1616 CAPITAL AVE # 200
OMAHA, NE 68102

PROJECT NO. 15-0000000000000000
SHEET NO. 15-0000000000000000
DATE 12/20/2020

BONITA PEAK REPOSITORY
BONITA PEAK MINING DISTRICT SUPERFUND SITE
SAN JUAN COUNTY COLORADO

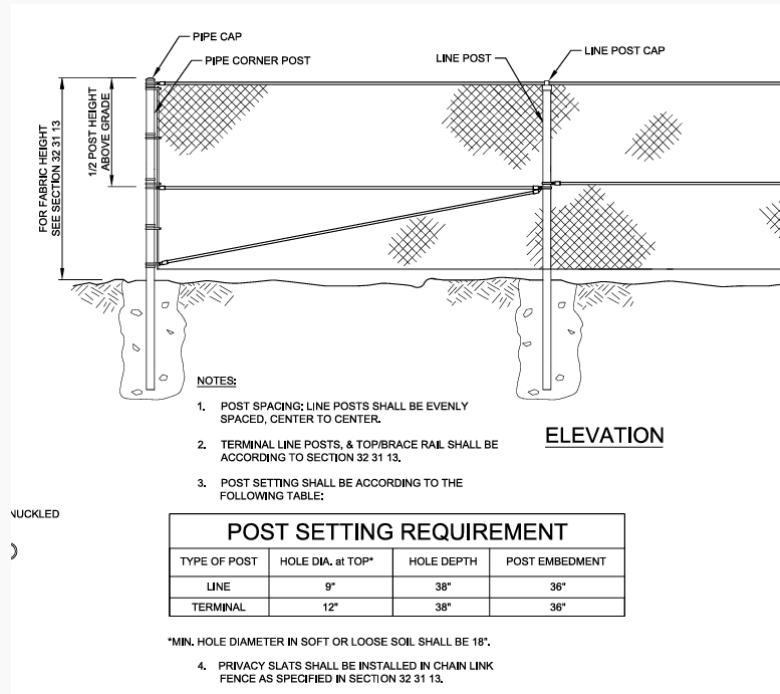
GRADING PLAN STAGE 1

SHEET ID
CG101



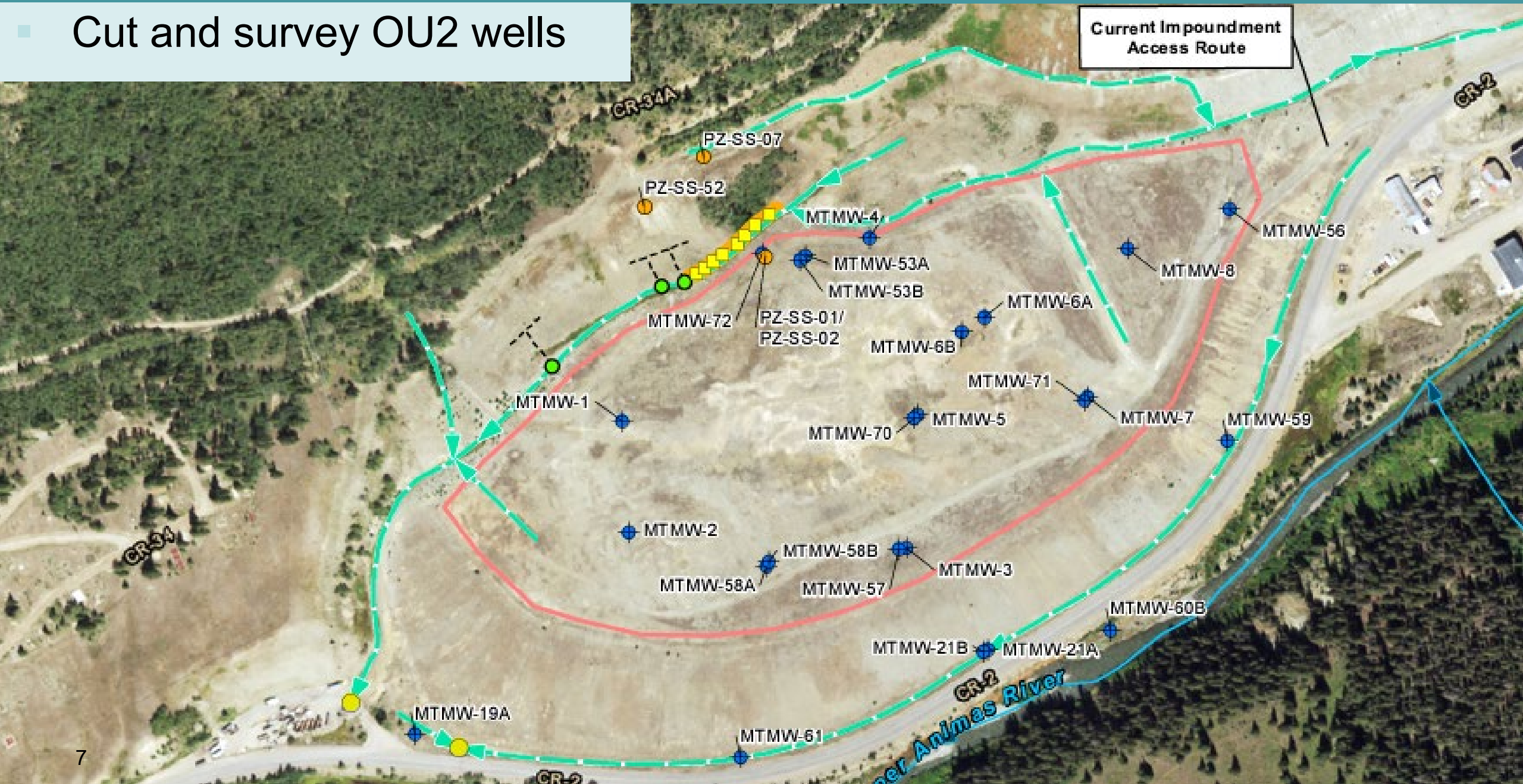
Repository (remaining construction and O&M)

Leachate Pond Fence



Repository (remaining construction and O&M)

- Cut and survey OU2 wells



Revegetation: green highlights

[illegible]

DESIGNED BY:	ISSUE DATE:
C. GABEL	MARCH 2024
DRAWN BY:	SOLICITATION NO.:
S. ZEILER	
CHECKED BY:	CONTRACT NO.:
	W912DQ-21-D-3004
SUBMITTED BY:	TASK NO.:
J. NIELSEN	F0026
SIZE:	FILE NAME:
A0	213478_CD101.dgn

U.S. ARMY CORPS OF ENGINEERS
OMAHA DISTRICT
1616 CAPITOL AVE # 3300
OMAHA, NE 68102

CDM
Smith

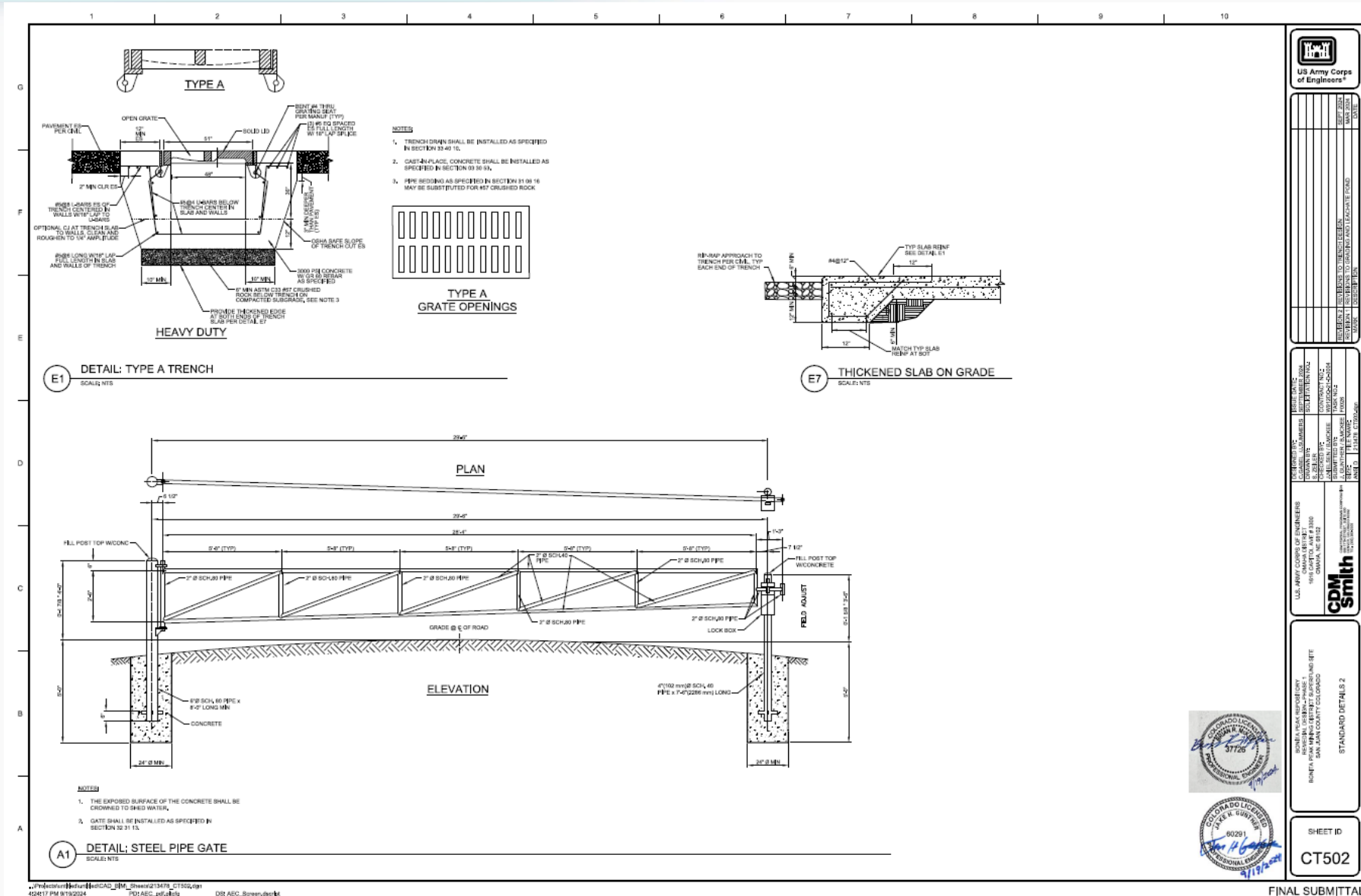
COM FEDERAL PROGRAMS CORPORATION
1881 17TH STREET, SUITE 600
DENVER, CO 80202
TEL: (303) 388-2500

MONITA PEAK REPOSITORY
MEDIAL DESIGN - PHASE 1
K K MINING DISTRICT SUPERFUND SITE
IN JUAN COUNTY COLORADO

DEMO PLAN STAGE 1
(SHEET 1 OF 1)

Repository (remaining construction and O&M)

Trench Drain (access ramp)



Drainage for Cells 2 and 3



Repository (remaining construction and O&M)

- Operation!: Transport and place waste in repository Cell 1

