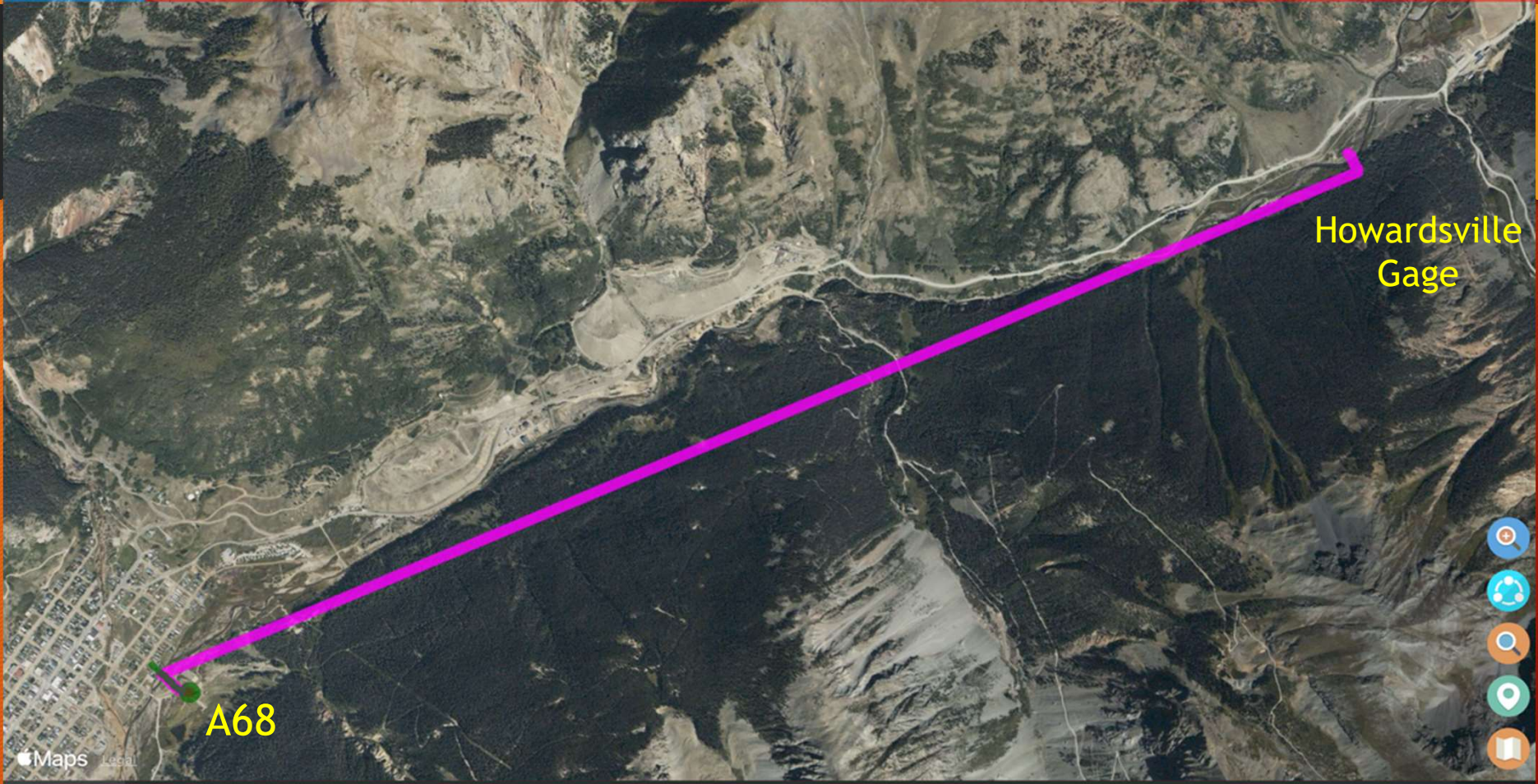


A68 Gage Data

Peter Butler, Ph.D.

CAG Meeting

1/18/24



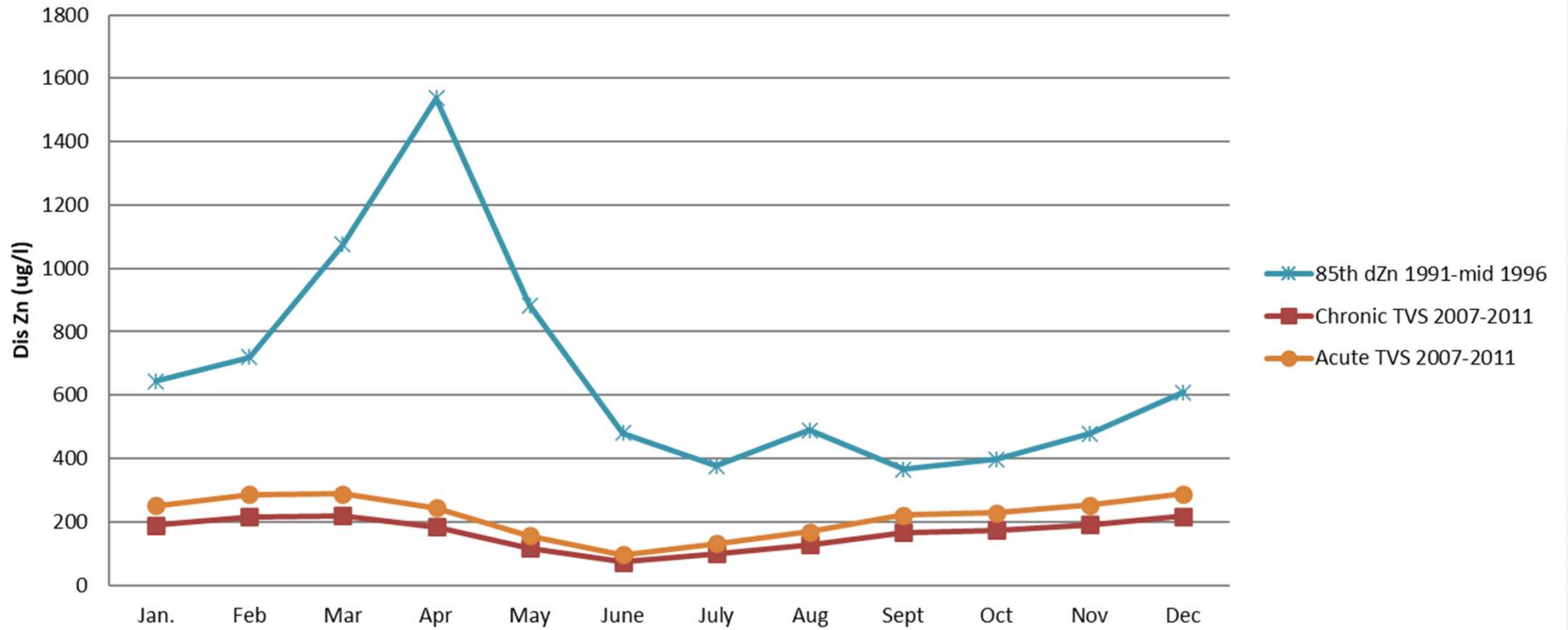
A68

Howardsville
Gage

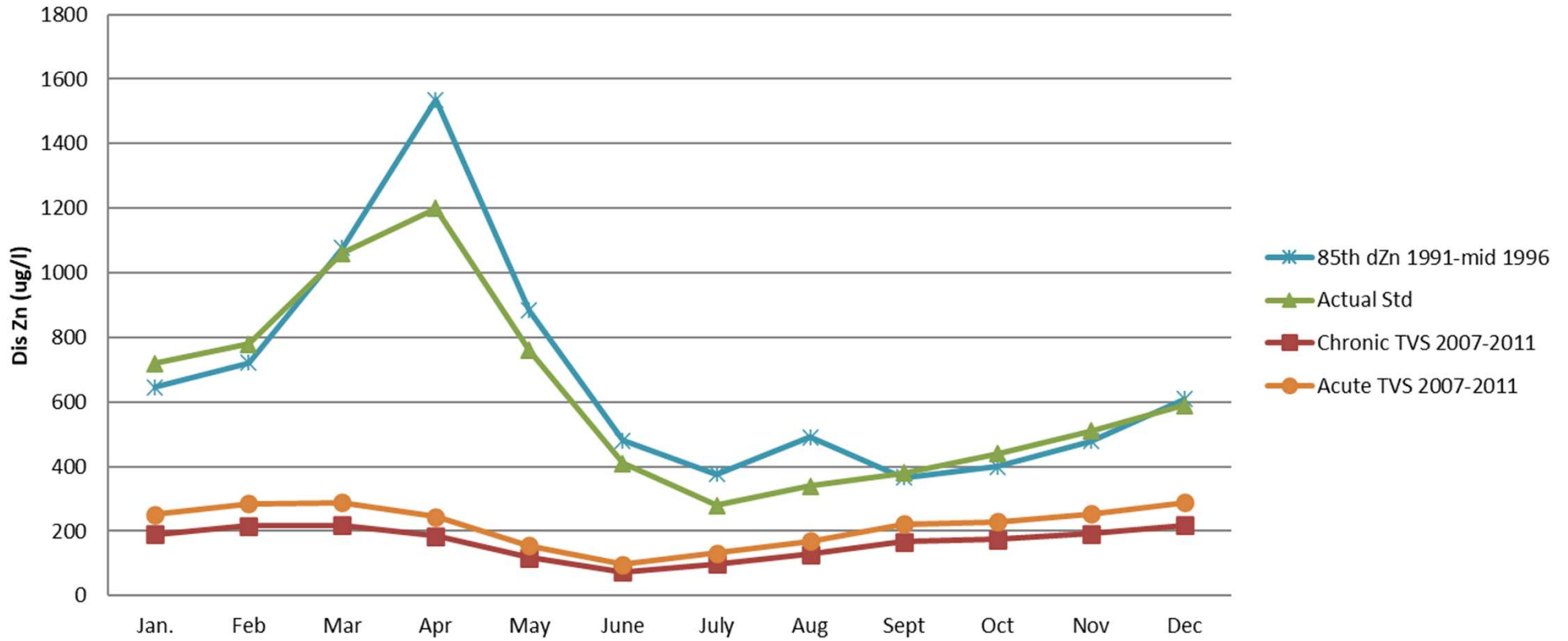
Apple Maps



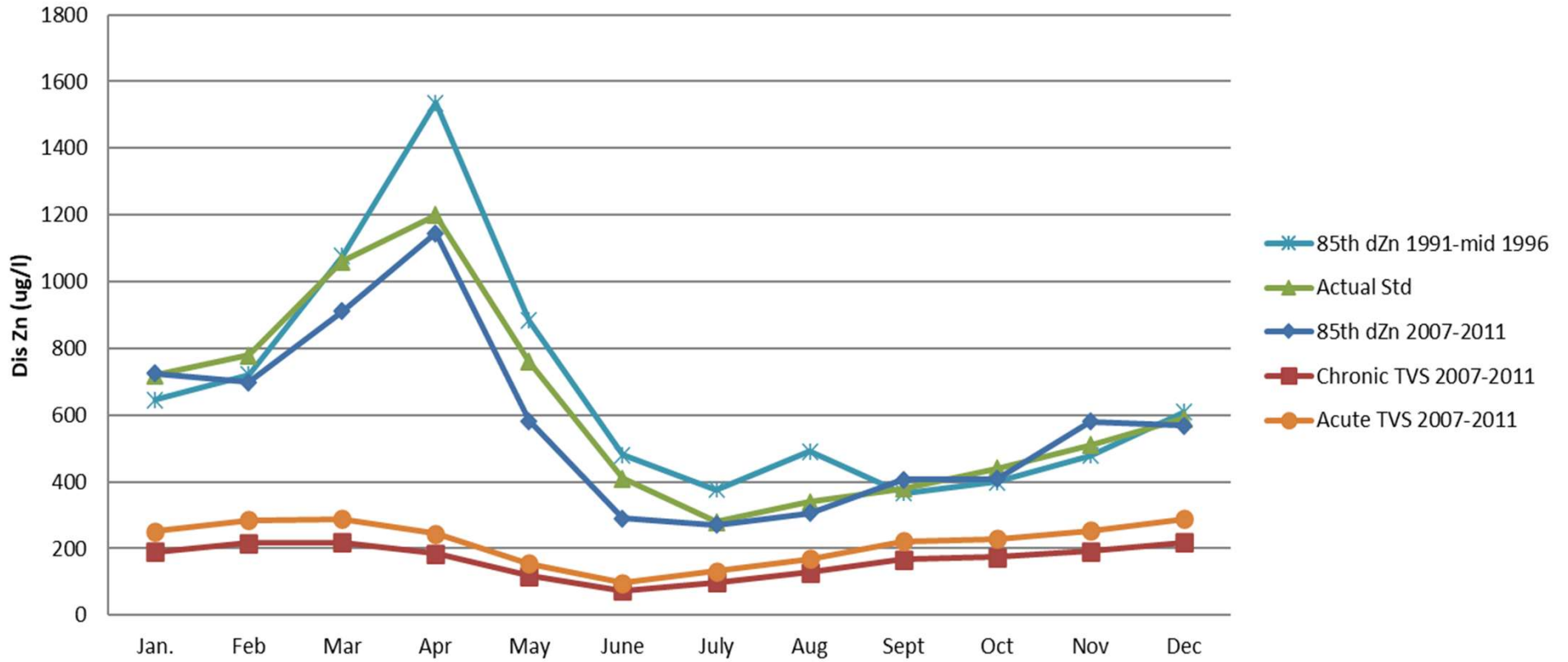
Dis Zn Conc. at A68



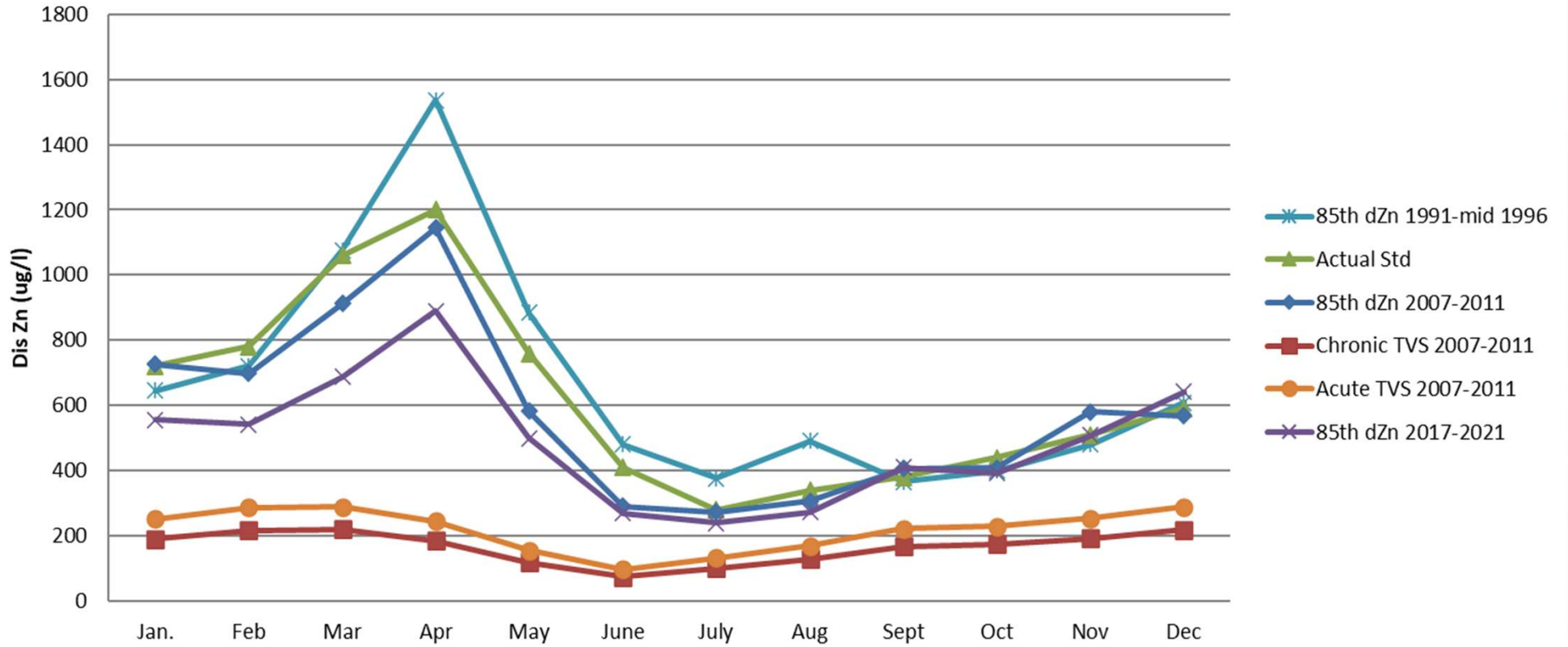
Dis Zn Conc. at A68



Dis Zn Conc. at A68



Dis Zn Conc. at A68



Modified Hazard Quotient for Dis. Zinc

Divide the 85th percentile for each month for the combined years, 2017 - 2021, by TVS calculated by using the average hardness for each month for the combined years, 2017 - 2021. (Remember, a HQ of 1.00 means the standard is met.)

	Jan.	Feb	Mar	Apr	May	June	July	Aug	Sept	Oct	Nov	Dec
Ratio of 85th dZn/TVS	2.75	2.33	3.27	4.86	4.29	3.59	2.25	2.03	2.34	1.70	2.43	2.50

Note that the highest modified hazard quotients correspond with the highest monthly modifies hazard quotients in the Animas Canyon.

Zinc	Howardsville Dis Zn Conc. Howardsville	Howardsville Dis Zn Load
Date	(ug/l)	(lbs/day)
2/7/2014	242.5	22
3/5/2014	244.1	21
3/21/2014	200	23
3/22/2014	227.9	22
3/25/2014	195.3	22
3/26/2014	247.3	28
4/4/2014	195.7	28
4/5/2014	219.5	25
4/9/2014	236.4	42
4/10/2014	208.2	51
4/10/2014	201.8	49
4/17/2014	254.7	74
4/18/2014	237.5	88
4/25/2014	399	299
4/26/2014	426.5	363
5/1/2014	342.8	124
6/6/2014	277.5	1210
7/1/2014	273.1	523
8/1/2014	187.4	112
9/5/2014	224.1	52
10/2/2014	358.8	267
11/7/2014	224.5	39
12/5/2014	243.7	33

Zinc	A68 Dis Zn Conc. A68	A68 Dis Zn Load
Date	(ug/l)	(lbs/day)
2/7/2014	534.7	66
3/5/2014	641	83
3/21/2014	1018.6	165
3/22/2014	1061.7	172
3/25/2014	1179.9	184
3/26/2014	1125.8	176
4/4/2014	1086.1	158
4/5/2014	1179.3	165
4/9/2014	1058.5	257
4/10/2014	972.5	330
4/10/2014	923	314
4/17/2014	834.2	292
4/18/2014	705.3	331
4/25/2014	470.9	434
4/26/2014	490.8	529
5/1/2014	633.2	304
6/6/2014	263.5	1449
7/1/2014	239.3	586
8/1/2014	229.3	188
9/5/2014	270	77
10/2/2014	333.8	342
11/7/2014	348.7	102
12/5/2014	416.6	

Zinc	Load Difference (lbs)
Date	
2/7/2014	44
3/5/2014	62
3/21/2014	142
3/22/2014	150
3/25/2014	162
3/26/2014	148
4/4/2014	130
4/5/2014	140
4/9/2014	215
4/10/2014	280
4/10/2014	265
4/17/2014	218
4/18/2014	242
4/25/2014	135
4/26/2014	166
5/1/2014	180
6/6/2014	239
7/1/2014	63
8/1/2014	76
9/5/2014	25
10/2/2014	75
11/7/2014	63
12/5/2014	

Dis Zinc Concentration

